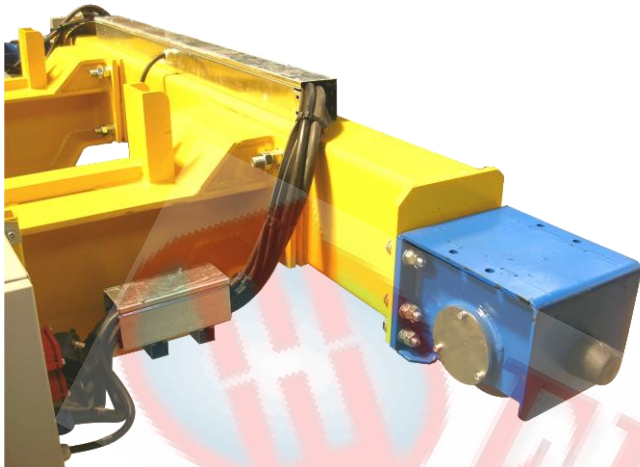




## EXPLOSION-PROOF WHEEL UNIT BGX



Steel structure with high degree of geometry accuracy

Wheels of alloyed solid bronze

Easy application to end carriage structure made locally

High tensile bolted connection between wheel unit and end carriage structure

Wheels with flanges up to 400mm diameter

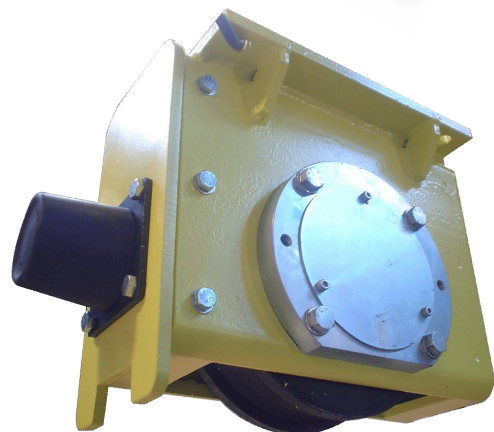
Guide rollers are available on request

Maintenance-free ball bearings

Design according to FEM15020

Travel drive with torque support low maintenance, direct drive

APPLICATION	CATEGORY	PROTECTION	EX PROTECTION CLASS
Zone 1	II 2 G	Gas	Exde IIB T4
			Exde II C T4
ZONE 2	II 3 G	Gas	Exde II B T3
ZONE 21	II 2 D	Dust	ExtD A21 IP66
ZONE22	II 3 D	Dust	ExtD A22 IP66



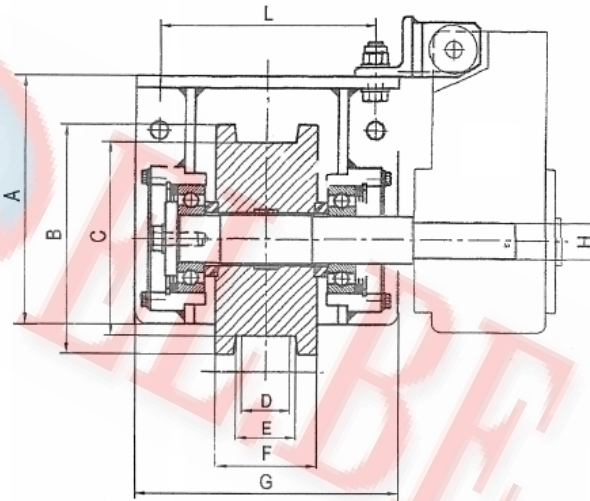
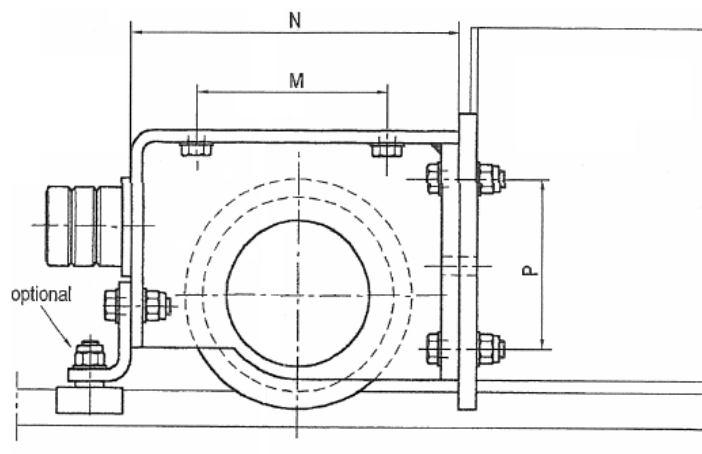


## EXPLOSION-PROOF WHEEL UNIT BGX





## EXPLOSION-PROOF WHEEL UNIT BGX



BGX														
TYPE	A	B	C	D	E	F	G	L	M	N	P	Bearing	H*	R max
	mm	mm	mm	mm	mm	mm	mm	mm	mm	mm	mm	2 x	mm	Kg
BGX125	145	150	125	30-40-50	40-50-60	80	220	160	150	240	100	6207 2RS	35	3000
BGX160	185	190	160	50-60	50-60	85	230	170	160	270	130	6308 2RS	40	4000
BGX200	233	230	200	54-64-74	54-64-74	100	250	205	180	313	164	6310 2RS	50	6400
BGX250	275	280	250	54-64-74	54-64-74	105	270	225	235	360	200	63122RS	60	8600
BGX315	345	350	315	65-80	65-80	120	320		270	440	245	6315 2RS	75	13000
BGX400	460	440	400	70-85	70-85	125	360					22218	90	20000
<b>Note H*</b>	Depending on the reduction gear													